

AFC Srl Handling Equipment

20122 Milano - V.le Regina Margherita 30 +39 02 98876001

29017 Fiorenzuola (PC) - Via P. Gobetti 4 +39 0523 349769

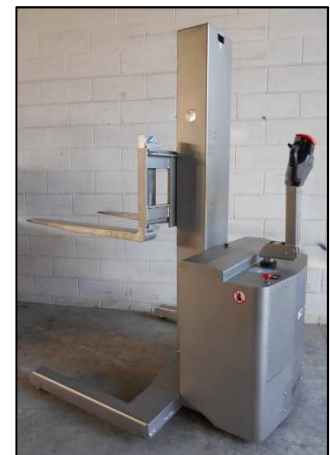
info@afhandling.com

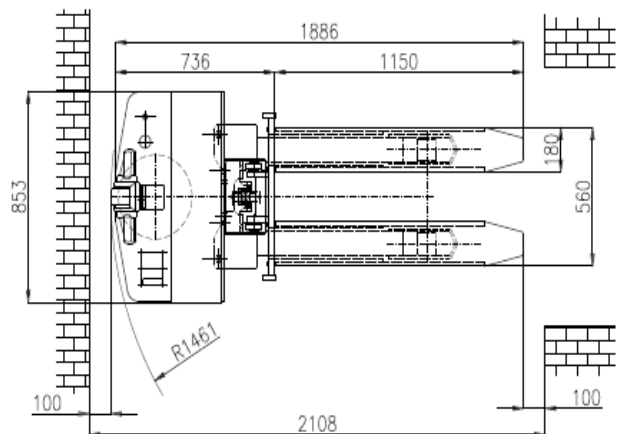
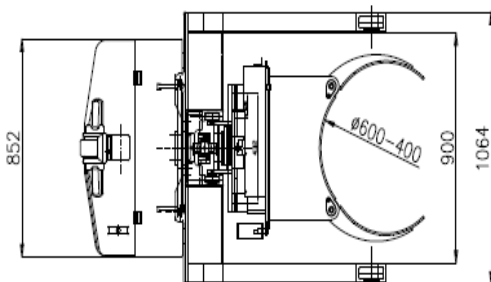
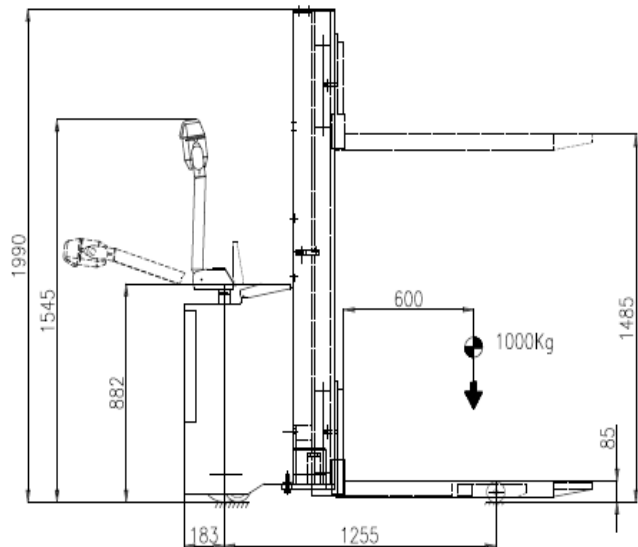
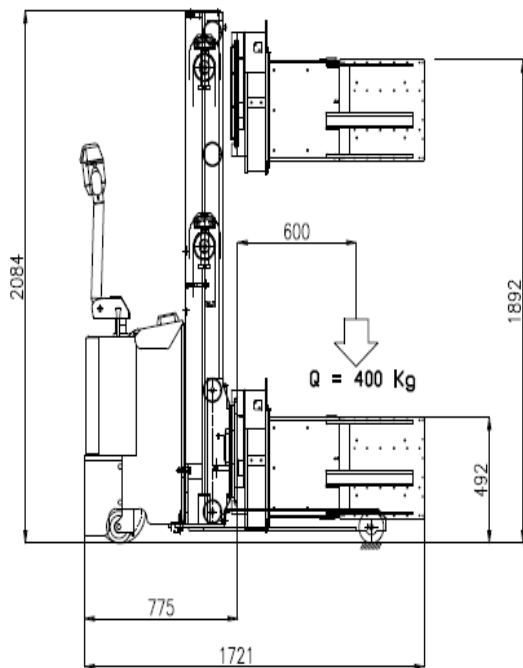
www.afhandling.com



CMX10

CMX-PRLI





IDENTIFICAZIONE	IDENTIFICATION	IDENTIFICATION	CARACTERISTICAS	
Modello	Manufacturer's type	Modèle	Modelo	CMX 10
Guida	Drive	Conduite	Conduccion	Pedestrian
Tipo di operazione	Type of operation	Type d'opération	Accionamiento	Electric (batt.)
Portata	Load capacity	Capacité de charge	Capacidad de carga	1000 Kg
Baricentro	Load centre	CDG	Centro de gravedad	600 mm
Peso con/senza Batt.	Weight with/without Battery	Poids avec/sans Batterie	Peso propio con/sin Bateria	700 - 580 Kg
RUOTE/TELAIO	WHEELS/CHASSIS	ROUES/CHASSIS	RUEDAS/CHASSIS	
Ruote (ant./post.)	Tyres (forward/backward)	Roues (avant/arrière)	Bandajes (delanteras/atras)	PU / PU
Dim. Ruote ant.	Tyres size, front	Dim. Roues avant	Dim. Ruedas del.	82 x 90 mm
Dim. Ruota trad.	Tyres size, drive	Dim. Roue motrice	Dim. Rueda tracciòn	250 x 80mm
Dim. Ruote stabilizzatrici	Tyres size, additional wheels	Dim. Roues stabilisatrices	Dim. Ruedas estabilizadoras	125 x 40mm
Nr. ruote (x=motrice)	Wheels Nr. (x=driven)	Nr. roues (x=motrice)	Cantidad (x=motrices)	N. 2 / 2 + 1x
PRESTAZIONI	PERFORMANCE DATA	PERFORMANCES	RENDIMIENTOS	
Velocità trazione	Traction speed (load/unload)	Vitesse traction (a/s charge)	Velocidad de traslaciòn (c/s carga)	4,0 - 5,0 Km/h
Pendenza massima	Max gradient	Max pente	Pendiente Max	6% - 10%
Freno di servizio	Service Brake	Frein de service	Freno de servicio	Electro magnet
MOTORE	E-MOTOR	MOTEUR	ACCIONAMIENTO	
Motore trazione	Traction motor	Moteur de traction	Motor de tracciòn	DC 1,2 kW
Motore sterzo	Steering motor	Moteur direction	Motor de direcciòn	-
Motore sollevamento	Lifting motor	Moteur de levage	Motor de elevaciòn	DC 2,0 kW
Batteria GEL	GEL Battery	Batterie GEL	Bateria GEL	24 V / 140 Ah
Peso batteria	Battery weight	Poids batterie	Peso bateria	120 Kg
Raddrizzatore a bordo	Charger (built in)	Chargeur intégré	Cargador incorporado	HF 24 V / 16 A